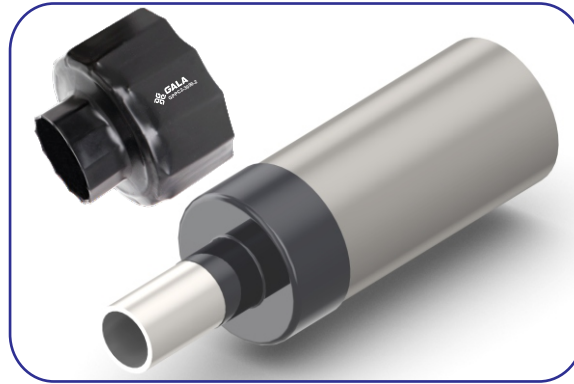


# PRE-INSULATED PIPE SEALING CAP for Single Outlet



Innovative Insulating Solutions



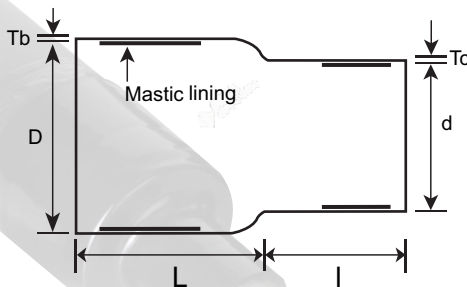
Pre-insulated Pipe Sealing Cap is Heat Shrink Cap with Hot Melt Adhesive / Mastic, used to seal and to protect the joints of pipelines and other substrates. The caps are manufactured from high quality Cross-linked Polyolefin material.

## ❖ Features:

- Excellent insulation end seals and provide maximum moisture protection.
- Provides watertight seal and prevents water access to the exposed insulation at the weld joint area.
- Provides corrosion protection to pipeline joints and other substrates.
- Hot melt adhesive lining provides 100% environmental sealing against weathering, moisture, contamination and adverse environmental conditions according to IP 68.
- Can be factory installed, once installed the Cap protects the pre-insulated pipe during transportation and storage.
- Reduces repairing cost.
- Resistance to UV rays & Ozone.
- Easy to install.

## ❖ Applications:

- Pre-insulated Pipes ● End Seal
- Water Pipe Lines ● Oil & Gas



## Technical Specification

PROPERTIES	VALUE	STANDARD
Tensile Strength	18 N/mm <sup>2</sup> (Mpa) (min.)	ASTM D638
Ultimate Elongation	450 % (min.)	ASTM D638
Water absorption	0.1 % (max.)	ASTM D570
Hardness	45 Shore D (min.)	ASTM D2240
Accelerated ageing	(150°C for 168 hrs)	ASTM D2671
Ultimate Elongation	320 % (min.)	ASTM D638
Low Temp. Flexibility on 25mm Mandrel (-40° C for 4 Hrs.)	No cracking	ASTM D3111
Continuous Temperature Limit	-40 to +100°C	IEC 216
Adherence to the casing	100 (max.) (@23° C 9N/cm)	Annex B
Adherence to the coating (3lpp)	100 (max.) (@23° C 9N/cm)	Annex B
Shear Resistance (Adhesive)	7 N/cm <sup>2</sup> (min.) (@23° C 10mm/min.)	DIN 30672
Softening Point (Adhesive)	130° C (min.)	ASTME28
Adhesion / Peel Strength	14 N/cm (min.)	ISO 21809-3

## Selection Chart

Code	Ds		Df		ds		df		Ls		Lf		Is		If		Tbf		Tcf		Mlb		Mlc	
	Min.	Max.	Min.	Max.	Min.	Max.	Min.	Max.	Min.	Max.	Min.	Max.	Min.	Max.	Min.	Max.	±10%	±10%	Min.	Max.	Min.	Max.	Min.	Max.
GPPC1-1030	60	30	45	10	70	70	40	50	3.2	4.5	30	15												
GPPC1-1047*	110	47	34	10	65	40	30	75	2.5	2.5	30	15												
GPPC1-1575*	150	75	34	15	65	40	30	75	2.5	2.5	30	15												
GPPC1-2460-1	85	60	42	24	70	87	90	108	3.4	3.3	30	15												
GPPC1-2460-2	105	61	45	24	70	87	85	108	3.4	3.3	30	15												
GPPC1-2460-3	125	61	65	24	75	87	75	108	3.4	3.3	30	15												
GPPC1-2460-4	140	60	76	24	70	87	70	108	3.4	3.3	30	15												
GPPC1-2475-1	118	75	52	24	65	75	30	40	2.5	2.3	30	15												
GPPC1-2475-1A	125	75	65	24	65	75	28	40	2.5	2.3	30	15												
GPPC1-2475-2	145	75	65	24	55	75	28	40	2.5	2.3	30	15												
GPPC1-2475-2A	145	75	75	24	55	75	26	40	2.5	2.3	30	15												
GPPC1-2475-3	158	75	70	24	55	75	26	40	2.5	2.3	30	15												
GPPC1-3090-1	165	90	100	30	80	85	37	50	2.3	2.5	30	15												
GPPC1-3090-2	185	90	67	30	65	85	32	50	2.3	2.5	30	15												
GPPC1-3090-3	185	90	105	30	80	85	34	50	2.3	2.5	30	15												
GPPC1-3090-4	207	90	105	30	70	85	34	50	2.3	2.5	30	15												
GPPC1-4090-1	156	90	95	40	90	72	60	118	3.7	4.5	30	15												
GPPC1-4090-2	178	90	105	40	95	72	55	118	3.7	4.5	30	15												
GPPC1-53140*	205	140	105	53	55	65	32	46	2.5	2.5	30	15												
GPPC1-68145-1*	245	145	155	68	63	75	43	61	2.5	2.5	30	15												
GPPC1-68145-2*	285	145	165	68	58	75	40	61	2.5	2.5	30	15												
GPPC1-120220-1*	305	220	190	120	80	100	30	43	2.5	2.5	30	15												
GPPC1-120220-2*	370	220	265	120	78	100	28	43	2.5	2.5	30	15												
GPPC1-225300	570	300	420	225	55	80	45	90	3.5	3.6	30	15												

\*Tools/Moulds can be developed on demand for \* marked sizes

D, d: Internal Diameter; S: As Supplied; f: After Free Recovery; L, I: Length

Tb, Tc: Thickness After Free Recovery, Mlb: Mastic Length of Body, Mlc: Mastic Length of Finger

All dimensions are in mm.



# GALA SHRINK FIT

Unit No.: 404, 405 & 406, 4th Floor, C Wing, Eureka Tower, Behind Toyota Show Room, Mind Space, Link Road, Malad (West), Mumbai - 400 064, India

P: +91 22 29675415 / 16 F: +91 22 2868 8990 E: info@galathermo.com W: www.galathermo.com

# PRE-INSULATED PIPE SEALING CAP for Double Outlet



**GALA**<sup>TM</sup>

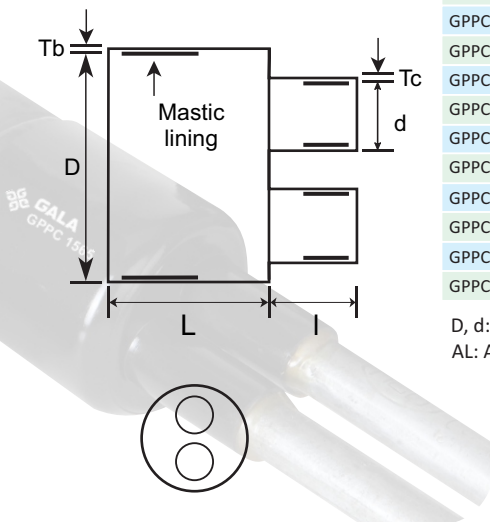
Innovative Insulating Solutions



Pre-insulated Pipe Sealing Cap is Heat Shrink Cap with Hot Melt Adhesive / Mastic, used to seal and to protect the joints of pipelines and other substrates. The caps are manufactured from high quality Cross-linked Polyolefin material.

## ❖ Features:

- Excellent insulation end seals and provide maximum moisture protection.
- Provides watertight seal and prevents water access to the exposed insulation at the weld joint area.
- Provides corrosion protection to pipeline joints and other substrates.
- Hot melt adhesive lining provides 100% environmental sealing against weathering, moisture, contamination and adverse environmental conditions according to IP 68.
- Can be factory installed, once installed the Cap protects the pre-insulated pipe during transportation and storage.
- Reduces repairing cost.
- Resistance to UV rays & Ozone.
- Easy to install.



## Technical Specification

PROPERTIES	VALUE	STANDARD
Tensile Strength	18 N/mm <sup>2</sup> (Mpa) (min.)	ASTM D638
Ultimate Elongation	450 % (min.)	ASTM D638
Water absorption	0.1 % (max.)	ASTM D570
Hardness	45 Shore D (min.)	ASTM D2240
Accelerated ageing	(150°C for 168 hrs)	ASTM D2671
Ultimate Elongation	320 % (min.)	ASTM D638
Low Temp. Flexibility on 25mm Mandrel (-40° C for 4 Hrs.)	No cracking	ASTM D3111
Continuous Temperature Limit	-40 to +100°C	IEC 216
Adherence to the casing	100 (max.) (@23° C 9N/cm)	Annex B
Adherence to the coating (3lpp)	100 (max.) (@23° C 9N/cm)	Annex B
Shear Resistance (Adhesive)	7 N/cm <sup>2</sup> (min.) (@23° C 10mm/min.)	DIN 30672
Softening Point (Adhesive)	130° C (min.)	ASTME28
Adhesion / Peel Strength	14 N/cm (min.)	ISO 21809-3

## ❖ Applications:

- Pre-insulated Pipes ● End Seal
- Water Pipe Lines ● Oil & Gas

## Selection Chart

Code	Ds	Df	ds	df	Ls	Lf	ls	lf	Tb	Tc	Mlb	Mlc
	Min.	Max.	Min.	Max.	Min.	Min.	Min.	Min.	±10%	±10%	Min.	Min.
GPPC2 1565S	115	65	36	15	60	80	40	54	2.2	2.0	30	15
GPPC2 1565	125	65	45	15	60	80	40	54	2.2	2.0	30	15
GPPC2 1565A	152	65	52	15	60	80	40	54	2.2	2.0	30	15
GPPC2 1565AA	156	65	45	15	60	80	40	54	2.2	2.0	30	15
GPPC2 2075	175	75	60	20	80	105	45	80	3.1	2.9	30	15
GPPC2 2075A	200	75	60	20	80	105	45	80	3.1	2.9	30	15
GPPC2 24135	235	135	68	24	80	160	50	70	2.8	2.5	30	15
GPPC2 55175	265	175	86	55	80	130	50	65	3.5	3.5	30	15
GPPC2 55175A	300	175	100	55	80	130	50	65	3.5	3.5	30	15
GPPC2 55175AA	355	180	155	60	80	130	50	65	3.5	3.5	30	15

D, d: Internal Diameter; S: As Supplied; f: After Free Recovery; L, I: Length; Tb, Tc: Thickness After Free Recovery, AL: Adhesive Length; Mlb: Mastic Length of Body, Mlc: Mastic Length of Finger All dimensions are in mm.



# GALA SHRINK FIT

Unit No.: 404, 405 & 406, 4th Floor, C Wing, Eureka Tower, Behind Toyota Show Room, Mind Space, Link Road, Malad (West), Mumbai - 400 064, India

P: +91 22 29675415 / 16 F: +91 22 2868 8990 E: info@galathermo.com W: www.galathermo.com